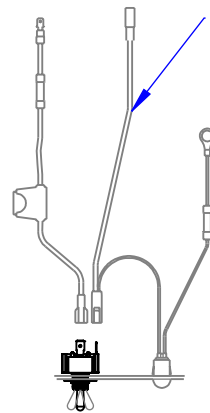


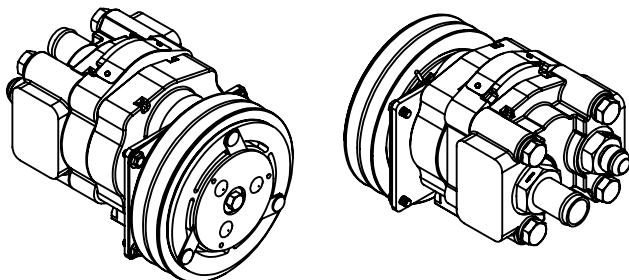
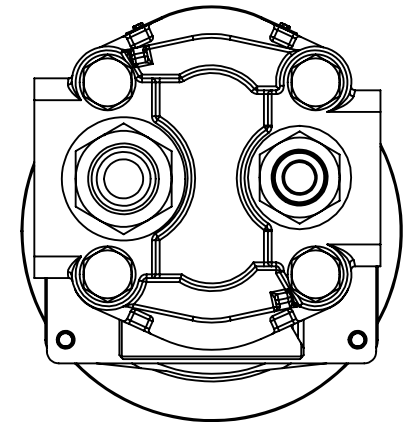
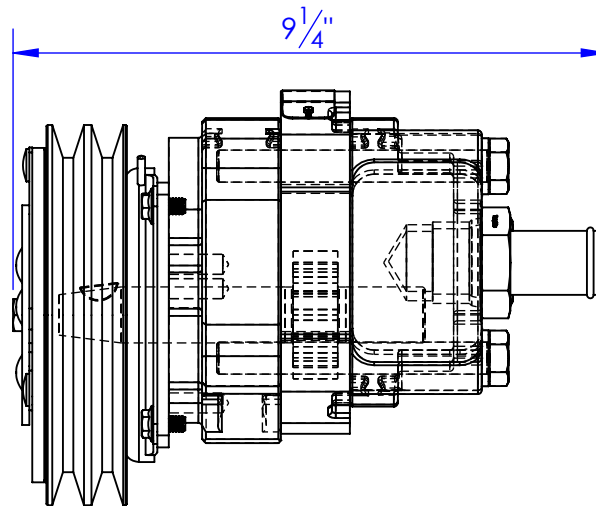
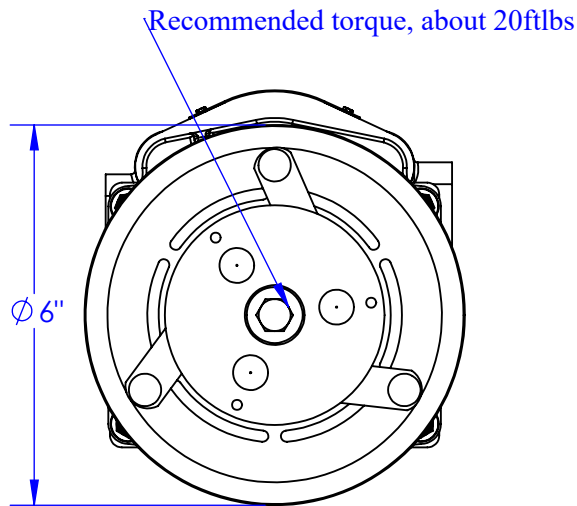
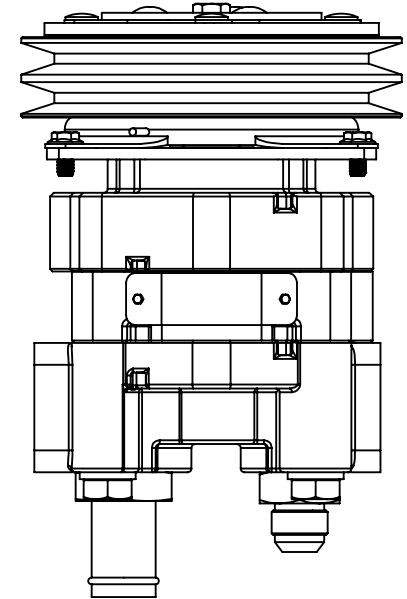
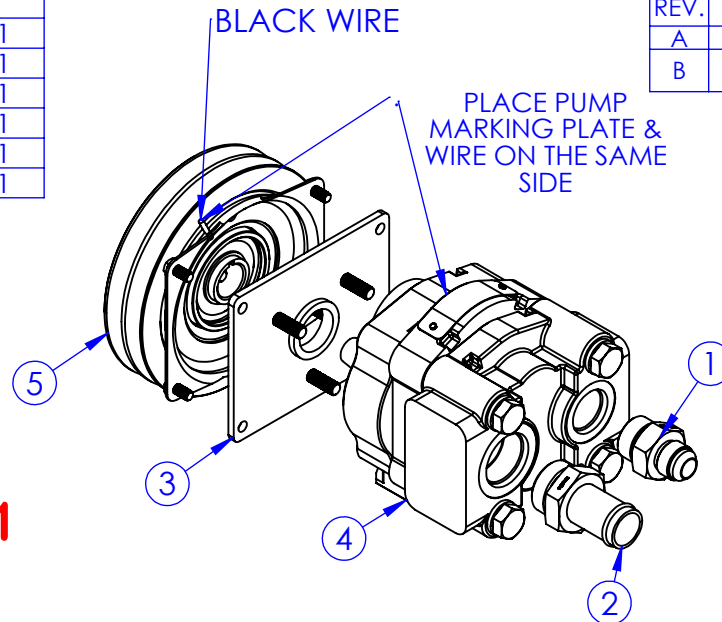
ITEM NO.	PART NUMBER	DESCRIPTION	QTY.
1	AD-6400 10-12	ADAPTER 10MJ x 12MB	1
2	HA-16-16MB	HOSE INSERT 4604-16-16MB	1
3	PU-15433 PLATE	MOUNTING ADAPTER	1
4	PU-CP16 65C 06	REAR PORT PUMP ONLY	1
5	PU-MA6ACU	2 GROOVE CLUTCH	1
6	EL-SK100	PUMP SWITCH KIT	1

REVISIONS			
REV.	DESCRIPTION	DATE	APPROVED
A	INITIAL RELEASE	3/1/2013	
B	ADDED ITEM NO. 6	11/7/2023	KD (BB)



**EL-SK-100: QTY 1**  
"SWITCH KIT, DASH"  
SEE DWG 10-0931-14  
FOR MORE DETAILS

**PU-RP6-11**



**PROPRIETARY AND CONFIDENTIAL**  
THE INFORMATION CONTAINED IN THIS  
DRAWING IS THE SOLE PROPERTY OF TRIPLE  
C INC. ANY REPRODUCTION IN PART OR  
AS A WHOLE WITHOUT THE WRITTEN  
PERMISSION OF TRIPLE C INC. IS PROHIBITED.

DIMENSIONS ARE IN INCHES  
TOLERANCES:  
FRACTIONAL  $\pm 1/16$   
ANGULAR: MACH  $\pm 1$  BEND  $\pm$   
TWO PLACE DECIMAL  $\pm 010$   
THREE PLACE DECIMAL  $\pm 005$

MATERIAL ---  
DO NOT SCALE DRAWING

NAME	DATE
DRAWN <b>HEATH</b>	11/7/2023
PART # <b>PU-RP6-11</b>	
ASM #	
COMMENTS: <b>2 GROOVE REAR PORT PARKER PUMP</b>	

P.O. BOX 248,  
SABETHA, KS 66534



SIZE	DWG. NO.	REV.
<b>A</b>	<b>10-0931-01 B</b>	<b>B</b>
SCALE: 1:3	WEIGHT: ---	SHEET 1 OF 1